



WELDLINE™
by Lincoln Electric

MIG/MAG TORCHES LGS2







MIG/MAG TORCHES

LGS2

LGS2 torches' range is our standard offer for MIG/MAG applications. With their simple and reliable design offering the best performance, LGS2 torches can meet the challenges of a variety of applications on site, from maintenance to manufacturing.

Our models are manufactured in Europe in compliance to the most demanding standard and the high quality components are the guarantee of an efficient welding.

Available in 1 water cooled, and 4 air cooled versions. LGS2 torches wear parts are compatible with the international standard.

PRODUCT ADVANTAGES

- ♦ Modern design
- ♦ Made in Europe
- ♦ Super grip *[dual component handle]*
- ♦ Excellent ergonomics and light weight
- ♦ European standard components
- ♦ CE compliant
- ♦ Competitively priced

APPLICATIONS

- ♦ Home / Farm / Shop
- ♦ Maintenance
- ♦ Fabrication
- ♦ Construction
- ♦ Automotive
- ♦ Vessel manufacture



LGS2 TORCHES

EN 60974-7

is the European norm requirement for MIG guns.

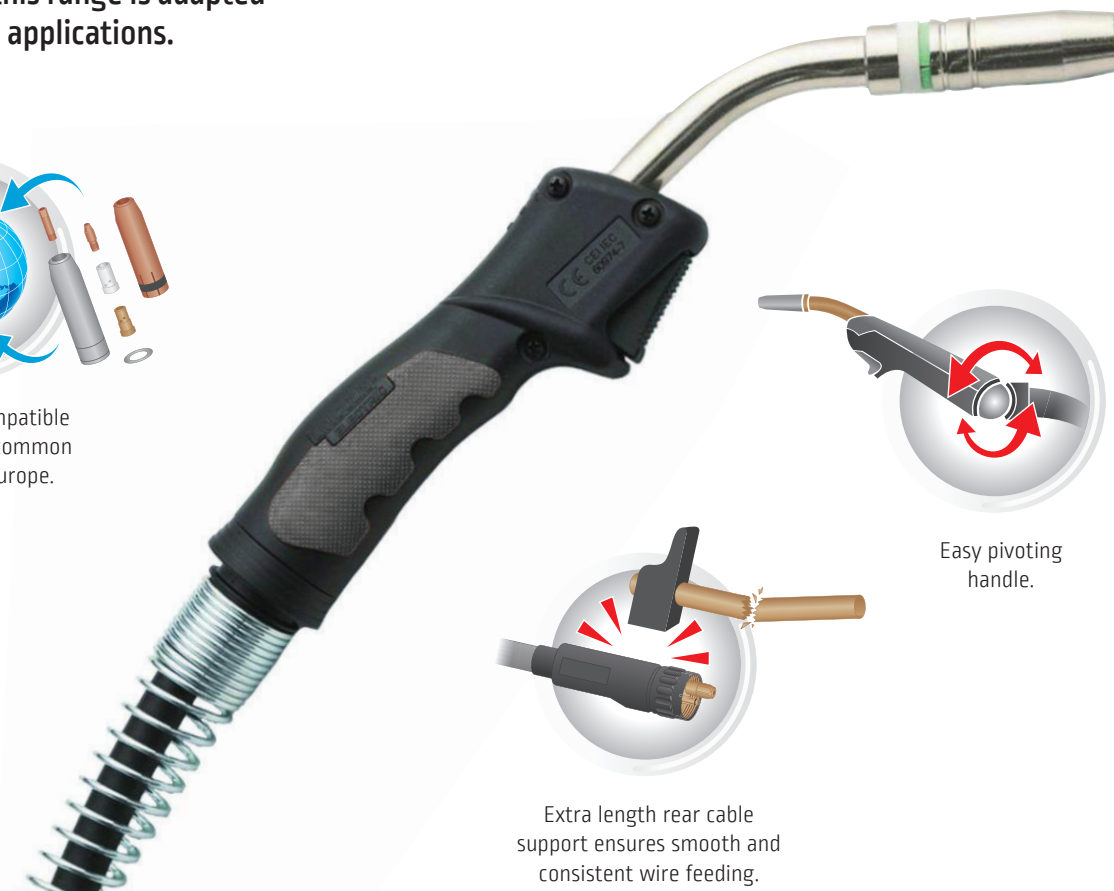
Simple and reliable, this range is adapted to the most common applications.



Wear parts compatible with the most common standard in Europe.



Extra-flexible cable.



Easy pivoting handle.

Extra length rear cable support ensures smooth and consistent wire feeding.

MODEL		AIR COOLING				WATER COOLING
		LGS2-150G	LGS2-250G	LGS2-240G	LGS2-360G	LGS2-505W
Duty cycle (CO_2 shielding gas)		180 A @ 60%	230 A @ 60%	250 A @ 60%	330 A @ 60%	500 A @ 100%
Applications		Thin plates, automotive industry	Thin plates, light fabrication	Thin plates, light fabrication	Vessel manufacture, steel structures	Heavy duty, high production
Wire diameter		Up to 1.0 mm	Up to 1.2 mm	Up to 1.2 mm	Up to 1.6 mm	Up to 2.4 mm
Original equipment	Contact tip	0.8 mm	1.0 mm	1.0 mm	1.2 mm	1.2 mm
	Conical nozzle	12 mm	15 mm	12.5 mm	16 mm	16 mm

To order					
3 m	W10429-15-3M	W10429-25-3M	W10429-24-3M	W10429-36-3M	W10429-505-3M
4 m	W10429-15-4M	W10429-25-4M	W10429-24-4M	W10429-36-4M	W10429-505-4M
5 m	W10429-15-5M	W10429-25-5M	W10429-24-5M	W10429-36-5M	W10429-505-5M

Choose your gun

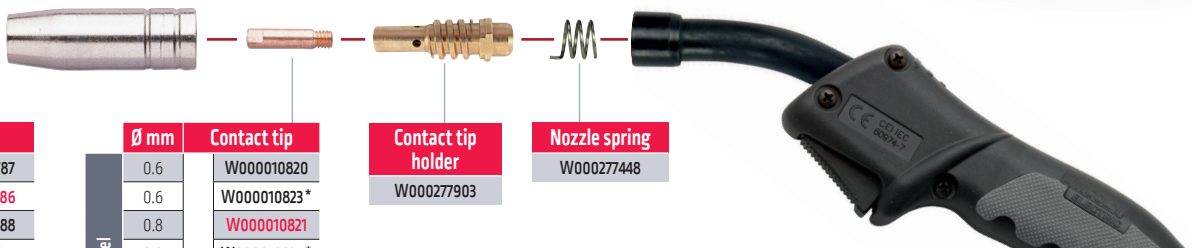
rating calculated using CO_2

■ Air cooled
■ Water cooled

SERIES	Size	Rate	160A	180A	200A	230A	250A	270A	330A	350A	420A	500A
LGS2	150G	60%	■									
	250G		■	■								
	240G		■	■	■							
	360G		■	■	■	■						
	505W	100%	■	■	■	■	■	■	■	■	■	■

WEAR PARTS

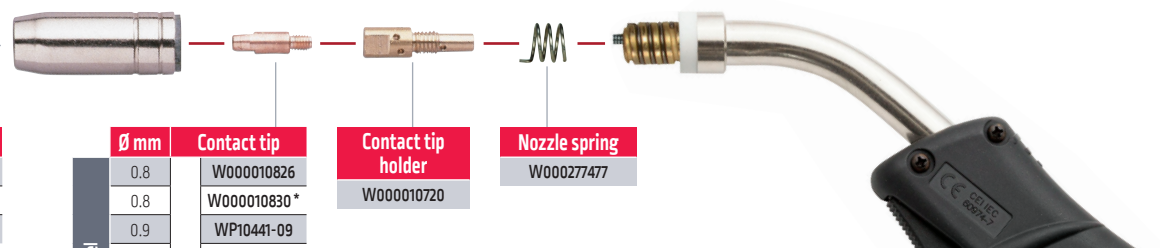
LGS2 150G



Nozzle		Ø mm	Contact tip	Contact tip holder	Nozzle spring	
Con. D10	W000010787	Steel M 6 x 25	0.6	W000010820	W000277448	
Con. D12.5	W000010786		0.6	W000010823 *		
Cyl. D16	W000010788		0.8	W000010821		
Innershield	WP10468		0.8	W000010824 *		
			0.9	WP10440-09		
			1.0	W000010822		
		1.0	W000010825 *			
		Aluminum	0.8	WP10440-08A		
			1.0	WP10440-10A		

LGS2 150G	Ø mm	Steel or PTFE liner			PTFE liner with copper spiral end		
		3 m	4 m	5 m	3 m	4 m	5 m
Steel (Steel liner)	0.6	W000010730 (blue)	W000010731 (blue)	W000010732 (blue)			
	0.8						
	0.9	W000010733 (red)	W000010734 (red)	W000010735 (red)			
	1.0						
	1.0						
Aluminum (PTFE liner)	0.8	WP10422-3M (blue)	WP10422-4M (blue)	WP10422-5M (blue)			
	1.0	W000010736 (red)	W000010737 (red)	W000010738 (red)	WP10419-3M (red)	WP10419-4M (red)	WP10419-5M (red)

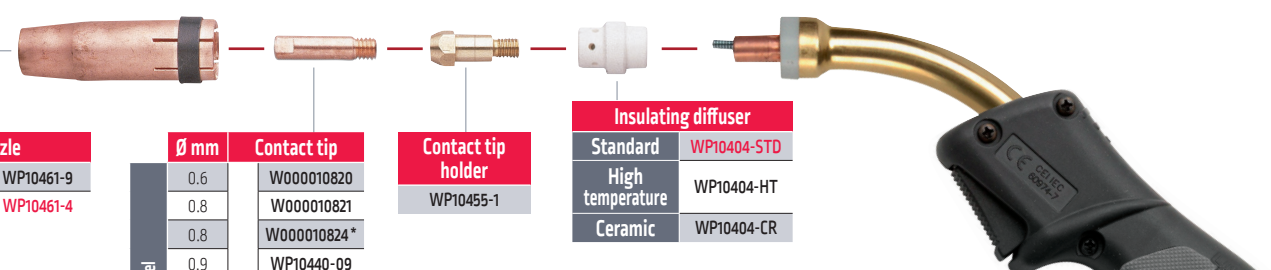
LGS2 250G



Nozzle		Ø mm	Contact tip	Contact tip holder	Nozzle spring	
Con. D11	W000010791	Steel M 6 x 28	0.8	W000010826	W000277477	
Con. D15	W000010790		0.8	W000010830 *		
Cyl. D20	W000010792		0.9	WP10441-09		
			1.0	W000010827		
			1.0	W000010831 *		
			1.2	W000010828		
		1.2	W000010832 *			
		Aluminum	0.8	WP10441-08A		
			1.0	W000010850		
			1.2	W000010851		

LGS2 250G	Ø mm	Steel or PTFE liner			PTFE liner with copper spiral end		
		3 m	4 m	5 m	3 m	4 m	5 m
Steel (Steel liner)	0.8	W000010730 (blue)	W000010731 (blue)	W000010732 (blue)			
	0.9						
	1.0	W000010733 (red)	W000010734 (red)	W000010735 (red)			
	1.2						
Aluminum (PTFE liner)	0.8	WP10422-3M (blue)	WP10422-4M (blue)	WP10422-5M (blue)			
	1.0	W000010736 (red)	W000010737 (red)	W000010738 (red)	WP10419-3M (red)	WP10419-4M (red)	WP10419-5M (red)
	1.2						

LGS2 240G



Nozzle		Ø mm	Contact tip	Contact tip holder	Insulating diffuser	
Con. D10	WP10461-9	Steel M 6 x 25	0.6	W000010820	Standard WP10404-STD	
Con. D12.5	WP10461-4		0.8	W000010821		
			0.8	W000010824 *		
			0.9	WP10440-09		
			1.0	W000010822		
			1.0	W000010825		
		1.2	WP10440-12			
		1.2	WP10440-12C *			
		Aluminum	0.8	WP10440-08A		
			1.0	WP10440-10A		
			1.2	WP10440-12A		

LGS2 240G	Ø mm	Steel or PTFE liner			PTFE liner with copper spiral end		
		3 m	4 m	5 m	3 m	4 m	5 m
Steel (Steel liner)	0.6	W000010730 (blue)	W000010731 (blue)	W000010732 (blue)			
	0.8						
	0.9	W000010733 (red)	W000010734 (red)	W000010735 (red)			
	1.0						
	1.2						
Aluminum (PTFE liner)	0.8	WP10422-3M (blue)	WP10422-4M (blue)	WP10422-5M (blue)			
	1.0	W000010736 (red)	W000010737 (red)	W000010738 (red)	WP10419-3M (red)	WP10419-4M (red)	WP10419-5M (red)
	1.2						

Original equipment parts

* CuCrZr contact tips

WEAR PARTS

LGS2 360G

Contact tip holder
W000010722 (M8)

Nozzle

Con. D12	W000010795
Con. D16	W000010794
Cyl. D20	W000010796

Contact tip

Ø mm	Contact tip
0.8	W000010834
0.8	W000010840 *
1.0	W000010835
1.0	W000010841 *
1.2	W000010836
1.2	W000010842 *
1.32	WP10445-132C *
1.4	W000262703
1.6	W000010837
1.6	W000010843 *
0.8	WP10445-08A
1.0	W000010853
1.2	W000010854
1.6	W000010855

Insulating diffuser

Standard	W000010780
High temperature	W000010781
Ceramic	W000010782

LGS2 360G

Ø mm	Steel or PTFE liner			PTFE liner with copper spiral end		
	3 m	4 m	5 m	3 m	4 m	5 m
Steel (Steel liner)	0.8	W000010730 (blue)	W000010731 (blue)	W000010732 (blue)		
	1.0	W000010733 (red)	W000010734 (red)	W000010735 (red)		
	1.2	W000010867 (yellow)	W000010868 (yellow)	W000010869 (yellow)	-	-
	1.4					
	1.6					
Aluminum (PTFE liner)	0.8	WP10422-3M (blue)	WP10422-4M (blue)	WP10422-5M (blue)		
	1.0	W000010736 (red)	W000010737 (red)	W000010738 (red)	WP10419-3M (red)	WP10419-4M (red)
	1.2					
	1.6	W000010745 (yellow)	W000010746 (yellow)	W000010747 (yellow)	-	-

LGS2 505W

Nozzle

Con. D14	W000010798
Con. D16	W000010797
Cyl. D20	W000010799

Insulating diffuser

Standard	W000010783
High temperature	W000010784
Ceramic	W000010785

Isolating washer
WP10450-L77

Contact tip holder
W000010724
WP10456-6 (Heavy duty)

Contact tip

Ø mm	Contact tip
0.8	W000010834
0.8	W000010840 *
1.0	W000010835
1.0	W000010841 *
1.2	W000010836
1.2	W000010842 *
1.32	WP10445-132C *
1.4	W000262703
1.6	W000010837
1.6	W000010843 *
0.8	WP10445-08A
1.0	W000010853
1.2	W000010854
1.6	W000010855

LGS2 505W

Ø mm	Steel or PTFE liner			PTFE liner with copper spiral end		
	3 m	4 m	5 m	3 m	4 m	5 m
Steel (Steel liner)	0.8	W000010730 (blue)	W000010731 (blue)	W000010732 (blue)		
	1.0	WP10410-3M (uncoated)	WP10410-4M (uncoated)	WP10410-5M (uncoated)		
	1.2	WP10411-3M (uncoated)	W000010740 (uncoated)	W000010741 (uncoated)	-	-
	1.4					
	1.6					
Aluminum (PTFE liner)	0.8	WP10422-3M (blue)	WP10422-4M (blue)	WP10422-5M (blue)		
	1.0	W000010736 (red)	W000010737 (red)	W000010738 (red)	WP10419-3M (red)	WP10419-4M (red)
	1.2					
	1.6	W000010745 (yellow)	W000010746 (yellow)	W000010747 (yellow)	-	-

Original equipment parts

* CuCrZr contact tips

ZIRCONIUM CONTACT TIP

LGS2 MIG/MAG torches can be equipped with CuCrZr contact tips that bring excellent performances compared to standard copper contact tips (Cu).

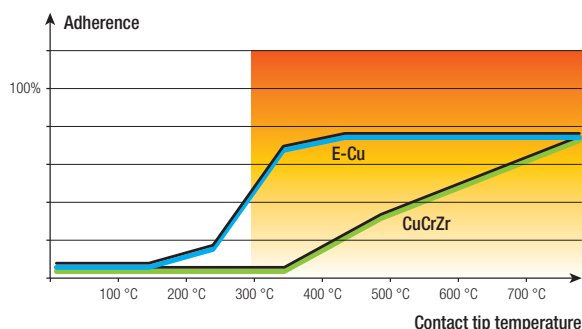
The wear:

The electrical conductivity being superior in a CuCrZr alloy, the arc transfer will meet less resistance and the contact tip will wear out less rapidly.

The lifetime:

The mechanical and thermal resistances also being superior to a copper alloy, the constraints, especially due to the wire friction and to the arc temperature, will be better tolerated with a CuCrZr contact tip.

Used in robotic welding for these advantages, the CuCrZr contact tip can improve the manual MIG/MAG welding performances as well.



Torch model	Screw thread	Wire diameter (mm)	To order
LGS2 150 G / LGS2 240 G	M6 x 25	0.6	W000010823
		0.8	W000010824
		1.0	W000010825
		1.2	WP10440-12C
LGS2 250 G	M6 x 28	0.8	W000010830
		1.0	W000010831
		1.2	W000010832
LGS2 360 G / LGS2 505 W	M8 x 30	0.8	W000010840
		1.0	W000010841
		1.2	W000010842
		1.32	WP10445-132C
		1.6	W000010843

MAINTENANCE BOXES

MIG-BOX for LGS2

The storage you were missing !



MIG-BOX LGS2 150G

To order W000387234

MIG-BOX LGS2 250G

To order W000387235

MIG-BOX LGS2 505W

To order W000387237

Features:

- ◆ Dimensions 36 x 24 x 5 cm.
- ◆ Plastified pieces guide included.
- ◆ Up to 65 consumables included in each box.

Features & benefits:

- ◆ No more losses.
- ◆ All the pieces on hand.
- ◆ Wear parts compatible with the most common standard in Europe.
- ◆ Ready-to-use.

MIG-BOX LGS2 240G

To order WP10429-K240

MIG-BOX LGS2 360G

To order W000387236



BEING PRESENT LOCALLY MAKES US MORE AWARE GLOBALLY

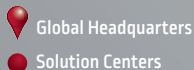
120+
YEARS OF EXPERIENCE

325+
GLOBAL R&D TEAM

36
SOLUTION
CENTERS

3.0
BILLION USD REVENUE

11 000
EMPLOYEES WORLDWIDE



CUSTOMER ASSISTANCE POLICY

The business of The Lincoln Electric Company® is manufacturing and selling high quality welding equipment, consumables, and cutting equipment. Our challenge is to meet the needs of our customers and to exceed their expectations. On occasion, purchasers may ask Lincoln Electric for information or advice about their use of our products. Our employees respond to inquiries to the best of their ability based on information provided to them by the customers and the knowledge they may have concerning the application. Our employees, however, are not in a position to verify the information provided or to evaluate the engineering requirements for the particular weldment. Accordingly, Lincoln Electric does not warrant or guarantee or assume any liability with respect to such information or advice. Moreover, the provision of such information or advice does not create, expand, or alter any warranty on our products. Any express or implied warranty that might arise from the information or advice, including any implied warranty of merchantability or any warranty of fitness for any customers' particular purpose is specifically disclaimed.

Lincoln Electric is a responsive manufacturer, but the selection and use of specific products sold by Lincoln Electric is solely within the control of, and remains the sole responsibility of the customer. Many variables beyond the control of Lincoln Electric affect the results obtained in applying these types of fabrication methods and service requirements.

Subject to Change – This information is accurate to the best of our knowledge at the time of printing. Please refer to www.lincolnelectric.eu for any updated information.



www.lincolnelectriceurope.com

